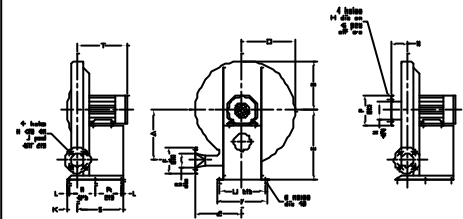
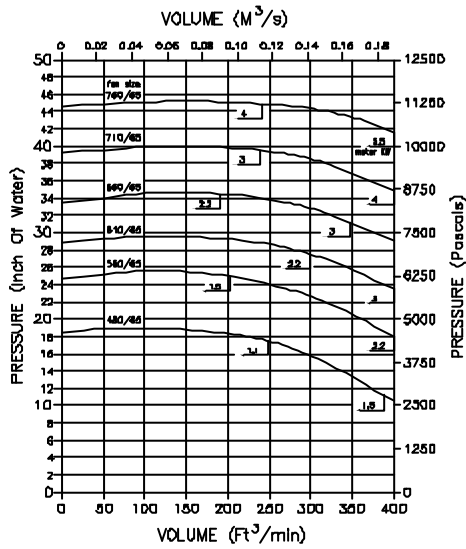


FAN PERFORMANCE DATA

HP065 BLOWERS

FAN DIMENSIONAL DATA

MOTOR SPEED: 2800 RPM
AIR DENSITY: 1.2KG/M³



FAN SIZE	A	B	C	D	E	F	G	H	I	J	K	L	M	N	P	Q	MINOR DIM	R	S	T	U	V
480/85	299	301	288	314	423	114	85	11	108	68	17	84	114	303	180		1.6	128	277	282	244	228
560/85	338	341	327	354	463	144	85	11	108	68	17	84	114	303	180		1.6	147	282	274	244	228
610/85	364	366	352	379	488	144	85	11	108	68	17	84	114	303	180		1.6	167	282	254	244	228
660/85	389	391	377	404	513	144	85	11	108	68	17	84	114	303	180		1.6	187	282	254	244	228
710/85	414	416	400	427	538	144	85	11	108	68	17	84	114	303	180		1.6	207	282	254	244	228
760/85	438	441	424	451	563	144	85	11	108	68	17	84	114	303	180		1.6	227	282	254	244	228



FAN ENGINEERING (midlands) LTD
18 Sandy Way, Anstey, Leicestershire, Leicestershire LE17 4CX
Tel: 01822 72000, Fax: 01822 64811, e-mail: faneng@faneng.co.uk



Model: No. 480/85-760/85
HP065 BLOWERS

CHART No:- C10027