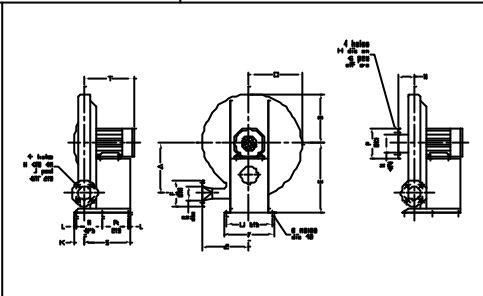
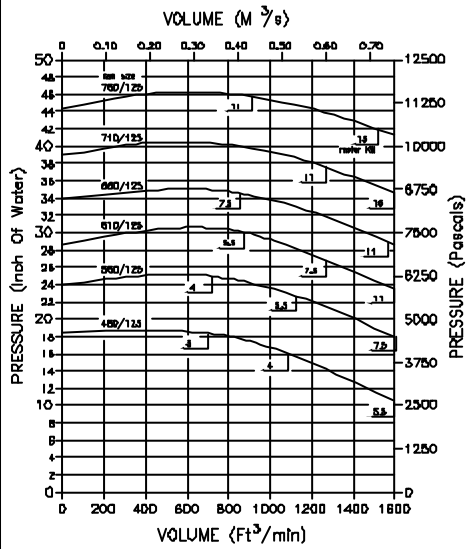


FAN PERFORMANCE DATA

HP125 BLOWERS

FAN DIMENSIONAL DATA

MOTOR SPEED: 2800 RPM
AIR DENSITY: 1.2KG/M³



FAN SIZE	A	B	C	D	E	F	G	H	J	K	N	P	Q	SHOWN ON	R	S	T	U	V	
600/125	372	328	302	208	190	232	175	11	101	86	17	114	200	218	3	170	211	264	278	245
710/125	382	338	312	218	200	242	185	11	101	86	17	114	200	218	4	212	253	307	321	275
800/125	392	348	322	228	210	252	195	11	101	86	17	114	200	218	5.3	230	285	339	353	285
900/125	402	358	332	238	220	262	205	11	101	86	17	114	200	218	7.3	250	305	359	373	305
1000/125	412	368	342	248	230	272	215	11	101	86	17	114	200	218	8.3	270	325	379	393	315
1100/125	422	378	352	258	240	282	225	11	101	86	17	114	200	218	11	290	345	399	413	325
1200/125	432	388	362	268	250	292	235	11	101	86	17	114	200	218	11	310	365	419	433	335
1300/125	442	398	372	278	260	302	245	11	101	86	17	114	200	218	11	330	385	439	453	345
1400/125	452	408	382	288	270	312	255	11	101	86	17	114	200	218	11	350	405	459	473	355
1500/125	462	418	392	298	280	322	265	11	101	86	17	114	200	218	11	370	425	479	493	365
1600/125	472	428	402	308	290	332	275	11	101	86	17	114	200	218	11	390	445	499	513	375
1700/125	482	438	412	318	300	342	285	11	101	86	17	114	200	218	11	410	465	519	527	385

FAN ENGINEERING (midlands) LTD
18 Searby Lane, Airdington Ind. Estate, Tamworth B77 4DX
Tel: 01827 57000, Fax: 01827 84841, E-mail: feng@feng.com



No. 480/125-780/125
HP125 BLOWERS

CHART No:- C1003D