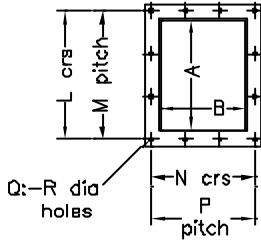
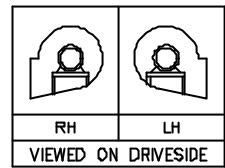


Optional Items Are Supplied (if Requested) At An Extra Cost



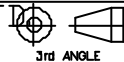
30mm Flange On Fans Up To & Including No.270
40mm Flange On No.310 Up To & Including No.680

MOTOR DETAILS	
FRAME SIZE	S
D71	201
D80	228
D90	262
D100	323
D112	366
D132	441
D160	555
D180	600

FAN SIZE	FAN DETAILS						INLET DETAILS					OUTLET DETAILS				
	A	B	C	D	E	F	G	H	J	K	L	M	N	P	Q	R
150	149	114	107	125	124	108	153	6	8	189	186	2	151	2	8	8
190	187	143	124	152	155	135	190	6	8	227	224	2	180	2	8	8
230	225	171	140	178	185	162	229	6	8	266	262	3	208	2	10	8
270	280	200	152	203	216	188	267	6	8	304	297	3	237	2	10	8
310	298	229	175	229	247	217	305	8	8	353	346	3	277	3	12	8
340	337	257	194	254	277	242	349	8	8	397	385	3	305	3	12	8
380	375	286	222	279	308	268	400	8	10	448	423	4	334	3	14	10
410	400	305	232	300	327	285	427	8	10	475	448	4	354	3	14	10
460	451	343	251	324	369	321	476	8	10	524	499	4	391	4	16	10
480	476	362	259	342	390	340	502	8	10	550	524	4	410	4	16	10
560	521	400	279	368	430	375	552	8	10	600	569	4	448	4	16	10
620	597	457	308	416	491	428	629	12	10	677	645	4	505	4	16	10
680	673	514	337	467	552	481	705	12	10	753	721	5	561	4	18	10



FAN ENGINEERING (midlands) LTD
19 Sandy Way, Arrington Ind. Estate, Tamworth B77 4EX
tel 01827 57000, fax: 01827 64641, e-mail: fanengin@aol.com



TITLE— No.150—680 MULTIVANE
D.DRIVEN/ INLET.MTD/ FANS

QUOTE REF.— DATE—
CHART No:— C10003