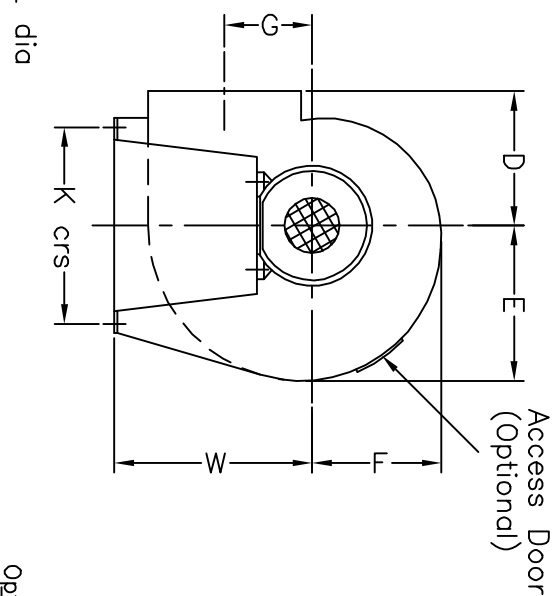
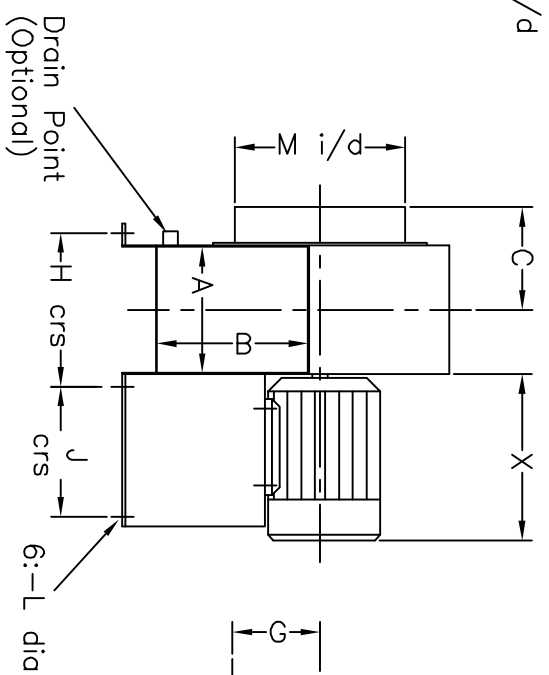
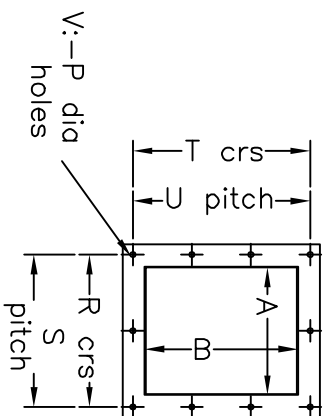


N:-P dia



MOTOR DETAILS	
FRAME SIZE	X
D71	201
D80	228
D90	262
D100	323
D112	366
D132	441

Optional Items Are Supplied (If Requested) At An Extra Cost

30mm Flange On Fan No.10
40mm Flange On No.12 Up To & Including No.27

FAN SIZE	FAN DETAILS																INLET DETAILS										OUTLET DETAILS										"W" CENTRE HEIGHT			
	A	B	C	D	E	F	G	H	J	K	L	M	N	P	Q	R	S	T	U	V	0°	90°	180°	45°	135°	225°														
10	128	180	127	175	186	164	116	168	310	281	12	169	6	8	207	168	2	218	3	10	261	209	187																	
12	153	216	140	195	223	197	139	205	310	334	12	203	6	8	253	205	2	266	3	10	312	246	220																	
15	191	270	159	245	279	247	174	243	310	426	12	253	6	8	303	243	2	320	3	10	374	302	270																	
18	229	324	193	290	335	297	209	281	310	518	12	304	8	8	354	281	2	374	3	10	436	358	320																	
21	267	378	212	340	391	347	244	319	360	610	16	355	8	10	405	319	2	428	3	10	498	414	370																	
24	305	432	231	390	447	397	279	357	360	702	16	406	8	10	456	357	3	482	3	12	560	470	420																	
27	343	486	250	440	503	447	314	395	360	794	16	457	8	10	507	395	3	536	4	14	622	526	470																	

FAN ENGINEERING (midlands) LTD
19 Sandy Way, Amington Ind. Estate, Tamworth B77 4EX
tel: 01827 57000, fax: 01827 64641, e-mail: fanengin@aol.com

No.10-27 PADDLE
DIRECT DRIVEN FANS

CHART No: --

DATE: --

C10044

R0°

R45°

R90°

R135°

R180°

R225°

R270°

L0°

L45°

L90°

L135°

L180°

L225°

L270°

TITLE: --

QUOTE REF: --